

Seek Thermal AttackPRO S

With Survey Mode | Assess. Direct. Attack.



Product Overview

Designed with firefighters, for firefighters, the AttackPRO™ S is the newest addition to the AttackPRO Series. It builds on the proven image quality, durability, and affordability of the original AttackPRO, with one key upgrade: Survey Mode—a powerful feature that enhances visibility during size-up and overhaul operations. With high-resolution, mixed-gain pixel technology, AttackPRO S ensures clear detail across both high-heat and cooler scenes, helping you see fire and crew in a single, detailed image.

Each kit includes the camera, two batteries, and a charging dock—everything you need, ready to go. Designed and Manufactured in the USA with Global Components. Thermal sensor designed and manufactured by Seek in Santa Barbara, CA USA

Key Features

- Mixed Gain with SV1 Image Optimisation: see the hottest and coolest regions of the scene simultaneously without freezing or switching gain modes; details enhanced with SV1
- Survey Mode: survey Mode is optimised for lower temperature scenes to help identify hot spots and hidden threats during size-up and overhaul.
- Durable, Waterproof Design: durable and reliable design built with IP67 rating and 2 meter drop resistance
- Wide, 57-Degree Field of View: easily scan a large area to identify hazards or victims in seconds
- Long-Lasting Rechargeable Battery: greater than 6 hours of continuous thermal imaging

Benefits

- Decision Making on Command: direct Firefighters, water, and resources with expedited tactical precision
- Robust Decision Making TIC: equip every commanding officer with the first affordable decision making TIC
- 300 Lumen Integrated Flashlight: LED flashlight available at the touch of a button
- Search and Rescue: find victims and self-rescue faster with a reliable personal TIC
- Execute 360 Size-ups & Overhaul Faster: when seconds count, a Seek decision-making TIC saves time and lives



Key Camera Specs

Resolution	320 x 240
Field of View	57° x 42°
Durability	IP67 waterproof, 2 meter drop
Detection	-4°F to 1022°F (-20°C to 550°C)
Imaging	Mixed Gain with SV1
Flashlight	300 Lumen LED

www.frsa.com.au | admin@frsa.com.au | + 61 7 3209 7422

Seek Thermal AttackPRO S

With Survey Mode | Assess. Direct. Attack.



Specifications	
Thermal Sensor	320 x 240 (76,800 pixels)
Detection Distance	12 inches to 1,000 feet
Field of View	57° HFOV, 42° VFOV
Temperature Range	-4 to 1,022°F (-20 to 550°C)
Operating Temp	-4 to 131°F (-20 to 55°C) - no time limit up to 302°F (150°C) - max 15 min up to 500°F (260°C) - max 5 min
Frame Rate	> 25 Hz Fast Frame
IP Rating	IP67 Waterproof
Flashlight	300 Lumen LED
Display	3.5" Color with Corning® Gorilla® Glass
Thermal Sensitivity	< 35 mK with SV1
User Interface	On device 2 tactile button operation
Temp. Display Scale	Fahrenheit or Celsius
Image modes	FIRE (TI Basic & TI Basic+) and SURVEY
Storage Media	NA
Battery	>6 Hours Thermal Imaging (w/o flashlight); >3hrs (with thermal AND flashlight)

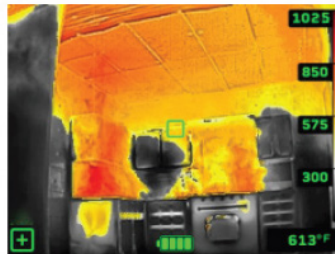


Seek AttackPRO S combines powerful thermal insight and a bright LED flashlight in an intuitive, two button interface.

Modes



TI BASIC
Maintain your situational awareness with a simple and decluttered display showing grayscale and colorised regions



TI BASIC+
Enhance your tactics with a spot temp readout while still maintaining grayscale and colorised regions



SURVEY MODE
Investigative mode with early colorisation at 65C (150F) ideal for size up, smells & bells, and overhaul

Thermal Applications



360 Size Up



Fire Attack



Overhaul

www.frsa.com.au | admin@frsa.com.au | + 61 7 3209 7422